



# CCA agar

ENUMERATION OF *ESCHERICHIA COLI* AND OTHER COLIFORM BACTERIA IN WATER WITH LOW BACTERIA NUMBERS

## RELIABLE

According to the ISO 9308-1 : 2014 standard

## PERFORMANT

Specific detection of *E. coli* and other coliform bacteria

## EASY

Clear distinction between *E. coli* (blue colonies) and other coliform bacteria (pink colonies)

## RAPID

Enumeration in  $21 \pm 3$  hours with a direct result for *E. coli* and a rapid confirmation test for other coliform bacteria

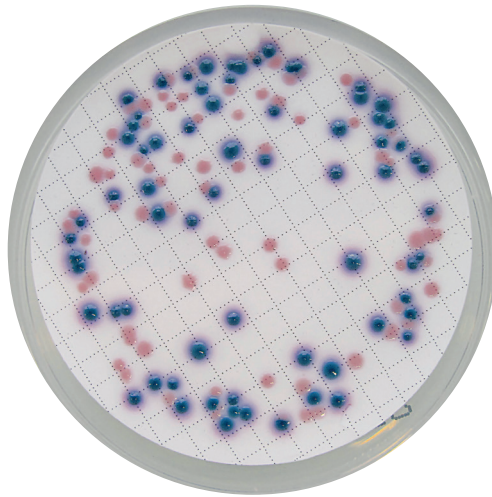


# Chromogenic Coliform Agar (CCA)

Enumeration method of *Escherichia coli* and other coliform bacteria by membrane filtration for waters with low bacterial background flora (ISO 9308-1 : 2014)



Filtrate 100 mL of water sample  
(or 250 mL of bottled water)



⊕ Incubation

$21 \pm 3$  h  
 $36 \pm 2$  °C

J+1

Enumeration and confirmation <sup>1</sup>

*Escherichia coli*

Coliforms other than *E. coli* <sup>2</sup>

Characteristic colony :  
dark blue to purple

Characteristic colony :  
pink to red

Oxidase test :  
NEGATIVE reaction

## To know

<sup>1</sup> Enumerate plates containing less than 100 characteristic colonies.

<sup>2</sup> Confirm presumptive coliform colonies by an oxidase test on at least 10 characteristic colonies.

The number of total coliform bacteria is the addition dark blue to purple colonies and oxydase negative pink to red colonies.

The detection of coliform is realized by the 2 specific enzymatic activities :  $\beta$ -galactosidase and  $\beta$ -glucuronidase.

Please refer to the technical data sheet for more information.

## To order

### Pre-poured CCA agar

BM18208 – 20 plates  $\varnothing$  55 mm

### Dehydrated CCA agar

BK204HA – 500 g